

HOME > PRODUCTS > DISC PUBLISHING > **DISCPRODUCER PP-100III**

Epson Discproducer PP-100III

[+ ENLARGE IMAGE](#)

Disc Publishing

The Professional CD/DVD/BD disc publishing system

[Printer Friendly Specs](#)[Buy Discproducer Inks & Options Online](#)[Current Promotions](#)[Where to Buy](#)

Overview

Built with Epson's **advanced robotics** and **printing technologies**, this compact, integrated disc publisher has all the features you need to burn and print up to **100** (per batch) **high-quality customised CDs, DVDs** or **BDs** unattended and on demand. It is ideal for a wide range of businesses such as service bureaus, educational institutions, photographers, software and IT companies, governments, corporations, medical organisations, etc.

FEATURES & BENEFITS

- Unattended production of CDs and DVDs or BDs, 100 disc (batch) capacity
- AcuGrip™ technology minimises two-disc feeding
- Highest quality printing with Epson renowned MicroPiezo® print head technology
- Six individual, high capacity ink cartridges with low-ink sensors
- Easy maintenance - disk drives and waste ink tanks can be replaced onsite by users
- Label printing up to 65 discs/hour
- Economical to operate and compact rugged construction for top reliability
- Easy-to-use software with label templates
- Free warranty upgrade to On-site warranty in capital cities with product registration

**Compatible with Mac and Windows OS**

Advanced Robotics

The Discproducer's robotic arm with patented AcuGrip™ technology ensures that only one disc is placed in the drive or printer at a time, eliminating dual feeding that can damage drives and interrupt unsupervised production runs.

Best-in-class printing

The Epson Discproducer features a built-in Epson inkjet printer with Epson's patented MicroPiezo® technology. Using six colours instead of the common four, it delivers the highest print quality available in its class for crisp, clear text and vibrant graphics at up to 1440 x 1440 dpi resolution. And with just one set of high-capacity ink cartridges, you can print over 1,000 discs. In addition, ink level status is shown with LED readout for each colour to prevent printing without ink.

Easy Maintenance with Field Replaceable Components

In addition to all of the advanced features and industry-leading reliability, Epson has specifically designed the PP-100III so that worn or damaged disc drives (individually or in pairs) and the waste ink maintenance tanks can be quickly and easily replaced on site by end users. This ensures maximum uptime and means it is no longer necessary to send PP-100III units in for this particular servicing.

Best-in-class Cost Per Disc

Thanks to Epson's individual inks system, the cost of each produced media is low as you only need to replace the colour used and, depending on the print image, you can produce over 1,000 discs from one set of cartridges. And when a cartridge becomes empty, the Discproducer automatically stops printing until it's replaced to avoid miss-prints.

The Epson Discproducer also provides you with more affordable disc duplication and printing. Cost per Disc calculations are based on Epson's Internal Testing with a set of new ink cartridges. For further details please see Disc yields page.

[Disc yields page....More.](#)

**TECHNOLOGY****SOFTWARE****Software Simple As 1, 2, 3**

Epson's comprehensive Total Disc Maker software lets you quickly compile your data, create labels and configure the production process all in one easy-to-use application. It also includes a program that displays the status of all jobs and devices. The bridge tool (downloadable via the website) allows you to communicate with other applications.

Backed by Epson

With Epson's expertise in precision robotics and advanced printing solutions, you can be sure that Discproducer comes with the quality and reliability that Epson is known for. And it is backed with Epson's leading service programs and one year RTB warranty. Free upgrade to On-site warranty (capital cites only) is available on product registration. For further details see **[Epson Warranty.](#)**

**AcuGrip™ Built to Perform**

Unlike other disc publishers, the Epson Discproducer features patented AcuGrip picking technology which ensures that only one disc is placed in the drive or printer even if two are stuck together. The arm has a guide that places it in the centre of the disc. Then three independently powered fingers extend to separate the top disc from the remaining discs. Finally the peel off lever (or kicker lever) lifts the top disc for transportation. If more than one disc is lifted, they will be put in the reject stacker or the system will indicate an error has occurred. This technology not only increases the life of the product, but helps protect against the interruption of unattended production runs due to mechanical blockage.

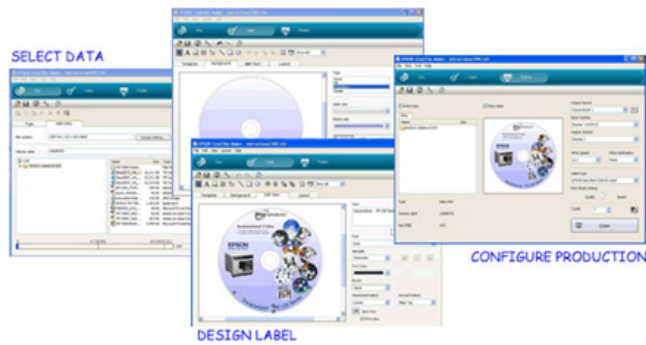
**Micro Piezo Print Head**

MicroPiezo® print heads are at the heart of every Epson ink jet printer. These print heads spray ink through microscopic nozzles, or holes on the print head. Each of these nozzles has tiny, piezo electric elements, which vibrate tens of thousands of times per second, allowing the nozzle to fire ink droplets onto the disc at extremely rapid rates. No heat is involved in the printing. This ensures greater accuracy when firing ink droplets precisely onto the disc. And, it gives the printer greater control over ink droplet size. MicroPiezo technology ensures uniform, stable ink droplets with virtually no satellites or misting all of which means you get the high quality results you'd expect from Epson.

**Building on the Strength and Experience of Epson Robotics**

When you build industrial robots, you learn about quality, reliability and precision engineering. And Epson is a world-leader in the design, development and manufacture of such robots as for medical technology and airbag testing. That's why our other products are so reliable – because they are built on the platform of knowledge and experience gained from the robotics environment. The Epson Discproducer™ is a perfect example. Its compact design, coupled with its dust-proof body and a minimum of moving parts, delivers precision performance, superb reliability and amazingly low running costs.

Discproducer comes with all the software you need to get the job done. Discproducer's easy-to-use Total Disc Maker Software includes disc editing, label editing and publishing functions. Simply select your data, design the label, configure the run, click "Publish" and you are done. Best of all, you don't have to be an expert to use the software. All it takes is a few easy steps.



1. Select Data

Epson's Disc Editing Software is easy to use. Simply select the media format, then drag, drop, and burn.

2. Design the Label

Use your own design or start with one of the many pre-defined templates and images provided. Then use the label editing tools to customize the label to your satisfaction. The preview display allows you to check your composition and save your work for easy retrieval in the future.

3. Configure Production

There are just a few steps before you're ready to publish. Epson's software leads you through the process, helping you to set the parameters such as the number of CDs, DVDs and BDs to be burned, the burning and print speed, the input/output trays for discs and print resolution. Then simply click "Publish" and your production run is underway.

4. Monitor Production


Epson's Total Disc Monitor Software keeps you informed about the status of all the important functions of the Discproducer as well as any current and pending jobs.

To register your Discproducer, [click here](#).

Specification

PRODUCT TYPE	Discproducer	
PRODUCT NAME	Discproducer PP-100III	
PRODUCT CODE	C11CH40031	
MAIN UNIT		
PUBLISHING SPEED *(Burn & Print)	CD	30 discs/hour, Epson-specified CD-R 600 MB data volume, writing speed: Drive max speed: 40 x
	DVD	15 discs/hour, Epson recommended DVD-R 3.8 GB data volume, writing speed: Drive max speed: 12 x
	BD	8.5 discs/hour, Epson specific BD-R 23.8 GB data volume, writing speed: Drive max speed: 8 x
	Printing Only (CD/DVD)	65 discs/hour, bidirectional (fast mode) 45 discs/hour, bidirectional (fine mode)
WRITING SPEED	CD	Maximum 40 x
	DVD-R, DVD+R	Maximum 12 x
	DVD-R DL, DVD+R DL	Maximum 8 x
	BD-R	Maximum 8 x
	BD-R DL	Maximum 8 x
POWER CONSUMPTION	52 W (Operation), 27 W (Standby)	
ELECTRICAL	Rated Voltage	AC100V to AC240V
	Frequency	50hz to 60Hz
EXTERNAL DIMENSIONS	377mm (w) x 493mm (d) x 348mm (h) (Excluding the AC cable & USB cable)	
WEIGHT	Approximately 24Kg (Including stackers and ink cartridges, excluding the AC cable and discs)	
ENVIRONMENTAL CHARACTERISTICS	Temperature and Relative Humidity	10° C to 35° C, 20% to 80% (no condensation)
EXPECTED LIFETIMES	Ink Pad Life	Approx. 30,000 printable discs **
HARDWARE		
CD/DVD DRIVES	Number of Drives	2 drives
PRINTER MODE	Print Head	Black ink 180 Nozzles, Colour ink 180 Nozzles x 5
	Print Direction	Bidirectional or unidirectional
	Print Resolution - Hi-Speed	1440 dpi x 720 dpi (fast mode)
	Print Resolution - Hi Resolution	1440 dpi x 1440 dpi (fine mode)
PRINT AREA	Standard setting for outside diameter	116 mm
	Outside diameter setting range	70-119.4 mm
	Standard setting for inside diameter	45 mm
	Inside diameter setting range	18-50 mm
	Guaranteed print area	45-116 mm
STACKER CAPACITY	Stacker 1,2,3	50 discs (It's possible to print 100 discs without stopping by using both stackers 1 and 2.)
	Stacker 4	5 discs

INTERFACE	1 x USB 3.0 Super speed	
INK CARTRIDGE	Ink Type	Dye ink
	Colours	Yellow, Magenta, Cyan, Light Cyan, Light Magenta, Black
	Yield ***	1,000 discs or more (diameter 45 - 116 mm, 16.7% colour sharing, continuous printing, mode setting: Fine)
	Cost per disc	Cost per Disc calculations are based on Epson's Internal testing. For further details please see Disc yields page .
MAINTENANCE BOX	Waste ink maintenance box is replaceable by users on-site in the field. This is available for purchase as a separate consumable item (Model PJMB100).	
SOFTWARE (WINDOWS)		
	Total Disc Maker	Installed on the user's computer to publish discs.
	Total Disc Monitor	Displays the status of JOBS and devices.
	Total Disc Setup	Installed on user's PC for easy PP-100III setup.
	TD Bridge system	Incorporation tool to use with other companies' applications, supplied free via the website on product registration. Click here to register.
WRITING DATA EDITING	Supported file format	
	Data files	Any files
	Audio files	WAVE, MP3, WMA
	Movie files	MPEG1
	Output support	data CD, audio CD, audio & data CD, Video CD, data DVD, Video DVD, BD
WRITING DATA COPYING	Direct copying	data CD, music CD, DVD (only single session and Disc-At-Once supported), BD
	Image file copying	ISO
LABEL EDITING	Template	Up to 58 templates (EPSON original) + 51 Patterns
	Background	Full-filled, gradation, graphic, including EPSON original background files (data size, volume label/title), arch style strings
	Printing following items	
	Text	strings, automatic inserted strings (published date, created date, counter, number of sheets, number of pages), writing face gearing strings (date size, volume label/title), arch style strings
	Graphic	BMP, JPEG, TIFF, PNG, EPSON original graphic files (up to 81), trimming, transmit
	Thumbnail	tile, circle, gearing with writing surface
	Folder list	Create folder list automatically
	Diagram	Straight line, rectangle, oval
	Export	TD Maker original formatted file.
PUBLISHING		Publishing modes (number of copies)
	Batch mode:	1- 100 CDs/DVDs/BDs, 3 stackers used
	Standard mode:	1- 50 CDs/DVDs/BDs, 2 stackers used
	External output mode:	1- 5 CDs/DVDs/BDs, 2 stackers & pick-up tray used
	Data comparing	Data comparing is selectable (audio CD not supported)
	Label type	Epson specified CD/DVD/BD Label CD/DVD/BD Premium Label CD/DVD/BD Label
	Number of discs	1 disc to 100 discs (depend on publishing mode)
STATUS MONITOR	Job monitoring	Job status, Cancelling, Pausing, Restarting
	Device monitoring	Ink remaining, Drive status, Printing status, Stacker status, Media remaining, USB Mode
SOFTWARE (MAC)		
	Total Disc Maker	Installed on the user's Mac to publish discs.
	Total Disc Utility	Displays the status of JOBS and devices and change the publish settings.
WRITING DATA EDITING	Supported file format	
	Data files	Any files
	Audio files	WAVE, MP3, AIFF, AAC
	Movie files	MPEG1
	Output support	data CD, audio CD, data DVD, Video DVD, BD
WRITING DATA COPYING	Direct copying	data CD, audio CD, DVD (only single session supported), BD
	Image file copying	ISO 9660 Level2, UDF Ver1.02, Joliet, HFS+
LABEL EDITING	Printing following items	
	Text	strings, automatic inserted strings (published date, created date, counter, number of sheets, number of pages), writing face gearing strings (date size, volume label/title)
	Graphic	BMP, JPEG, TIFF, PNG, PDF, AI (For PDF and AI files are available only they can be previewed from Finder.)
	Barcode	JAN8/EAN8, JAN13/EAN13, ITF, CODE128, PDF417, QR(model 2), CODE39, NW-7
	Export	Windows bitmap. jpeg, jpeg2000, tiff, png
PUBLISHING		Publishing modes (number of copies)
	Standard mode:	1- 100

	Low volume mode:	1-20 (Stacker 3 is used in this mode)
	Data comparing	Data comparing is selectable (audio CD not supported)
	Label type	Epson specified CD/DVD/BD Label CD/DVD/BD Premium Label CD/DVD/BD Label
	Number of discs	1 disc to 100 discs (depend on publishing mode)
STATUS MONITOR (Total Disc Utility)	Job monitoring	Job status, Cancelling, Pausing, Restarting
	Device monitoring	Ink remaining, Drive status, Printing status, Stacker status, Media remaining
REQUIRED SYSTEM		
REQUIRED PC ENVIRONMENT	Operating System	Windows® 7, Windows® 8, Vista SP1 or later; Windows® XP SP2 or later, Windows® 2000 SP4 or later , Server 2008 R2, Server 2008 SP2 or later; and Server 2003/2003 R2 SP2 or later (Windows XP and Server 2003/2003 R2 32 bit only)
	CPU	Intel® Pentium® 4 Processor 1.4GHz or higher (2.0GHz or higher for Server 2008)
	Memory	2Gb or larger (Vista: 1Gb or larger)
	HDD	30 Gb available space or larger, (50Gb available space Windows Server 2008) 7,200 rpm or more
	Graphics environment	XGA or more, 65,536 colours or more
	Sound environment	A sound device and a supported driver must be installed for music media.
	Interface	USB 2.0 or USB 3.0
REQUIRED MAC ENVIRONMENT	Operating System	Mac OS 10.7.3 Lion, Mac OS 10.6.8 Snow Leopard, Mac OS 10.8.2 Mountain Lion
	CPU	Mac OS X 10.6.8 Snow Leopard : Intel Core Duo 1.83GHz or more, Mac OS X 10.7.3 Lion : Intel 64bit CPU Mac OS X 10.8.2 Mountain Lion : 2GB or larger
	Memory	Mac OS X 10.6.8 Snow Leopard : 1GB or larger, Mac OS X 10.7.3 Lion : 2GB or larger, Mac OS X 10.8.2 Mountain Lion: 2GB or larger
	Graphics environment	Graphics environment: XGA or more
	Interface	USB 2.0
SUPPORTED MEDIA		
SIZE	Outside diameter	120 mm ± 0.3 mm
	Inside diameter	15 mm + 0.1/-0 mm
	Thickness	1.2 mm + 0.3/-0.1 mm
FORM	Only standard 12 cm (4.7 inch) discs	
TYPE	CD-R, DVD-R, DVD+R, DVD-R DL, DVD+R DL	
SURFACE	Inkjet printable	
CONSUMABLES		
PRODUCT	PRODUCT NAME	PRODUCT CODE
Ink cartridge cyan	PJIC1(C)	C13S020447
Ink cartridge light cyan	PJIC2(LC)	C13S020448
Ink cartridge light magenta	PJIC3(LM)	C13S020449
Ink cartridge magenta	PJIC4(M)	C13S020450
Ink cartridge yellow	PJIC5(Y)	C13S020451
Maintenance Box	PJMB100	C13S020476
WARRANTY*	1 year (free upgrade to on-site on product registration)	
Click here to purchase Epson Extended Warranties, Accessories, and Ink Cartridges online		
* For more information on warranty visit Epson Warranty .		
REMARKS		
<p>* Test condition: [PC Used for testing] OS: Windows® XP Professional SP2, CPU: Pentium®4 2.4 GHz, Chipset: Intel®, RAM: 1 GB, Free HDD area: 10 GB, I/F: USB 2.0 High speed, Software: Epson Total Disc Maker < Measurement of writing and printing per an hour > Writing mode: fast, Capacity: 600MB (CD), 3.8GB(DVD), Printing mode: fast and full-colored, Result: 32 CDs or 18 DVDs < Measurement of printing per an hour > Printing mode: fast and full-colored, high quality and full-colored, Result: 65 discs (fast) or 50 discs (high quality) Example image of printing data is below.</p>		
		
** The printer's ink pad is estimated to become saturated and need replacing after about 30,000 discs. Based on printing 2000 discs per month, bi-directional. Actual results will vary based on such factors as images printed, print settings, media type, frequency of use and temperature.		
*** Cartridge yields vary considerably based on images printed, print settings, media type, frequency of use and temperature. For print quality, a variable amount of ink remains in the cartridge after the "replace cartridge" indicator comes on. PP-100 ships with full cartridges and part of the ink from the first cartridges is used for priming the printer.		
When an ink cartridge needs replacing, you cannot continue copying or printing without replacing the relevant cartridge, even if other cartridges don't need replacing.		
You should leave a cartridge needing replacement installed in the printer until you have obtained a replacement. Doing otherwise may cause ink remaining in the print head nozzles to dry out and affect printer operation.		
To ensure ongoing print quality and trouble-free operation, a variable amount of ink will be present in a cartridge that is low on ink after the "Replace Cartridge" indicator comes on.		
This printer will use a quantity of ink from each cartridge for print-head cleaning and maintenance and will use ink from all cartridges for both black and colour printing.		

All features and specifications described are subject to change without notice.
EPSON is a registered trademark of Seiko Epson Corporation.
Discproducer and AcuGrip are trademarks of Seiko Epson Corporation.
Windows is a registered trademark of Microsoft Corporation in the United States and/or other countries.
Pentium is registered trademark of Intel Corporation in the U.S. and other countries.
Company and product names are trademarks or registered trademarks of their respective companies.

Usage Conditions

Epson products are designed and made to give highly reliable use and long life when used according to its specifications. With any system, product or device used in situations where human life may be involved or at risk, Epson advises that you should take all necessary steps to ensure the suitability of your Epson product for inclusion in your system, and recommends that you include fail-safe procedures and redundancy support or backup equipment in your system, to maintain the maximum safety margin and optimum system reliability. Examples include but are not limited to – do not interfere with any electrical components within the device, do not use items supplied with the product for purposes other than as intended by Epson (ie mains cords, inks, CDs, plastic wrapping) and do not make modifications to the product.

This printer is designed to function only with genuine Epson ink cartridges and not with third party ink cartridges. The printer may not function properly or at all if you use third party ink cartridges.

Consumables

INK CARTRIDGES	PRODUCT CODE
<u>Black Ink Cartridge for Discproducer</u>	C13S020452
<u>Cyan Ink Cartridge for Discproducer</u>	C13S020447
<u>Light Cyan Ink Cartridge for Discproducer</u>	C13S020448
<u>Light Magenta Ink Cartridge for Discproducer</u>	C13S020449
<u>Magenta Ink Cartridge for Discproducer</u>	C13S020450
<u>Waste ink maintenance box for PP-100II and PP-100AP</u>	C13S020476
<u>Yellow Ink Cartridge for Discproducer</u>	C13S020451